

Primo för Violin

Anton Ericsson

Köping

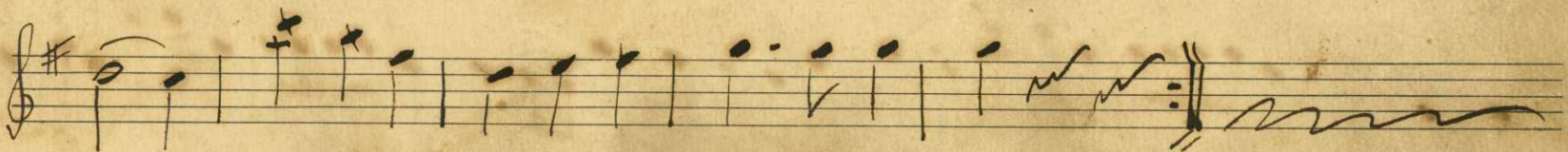
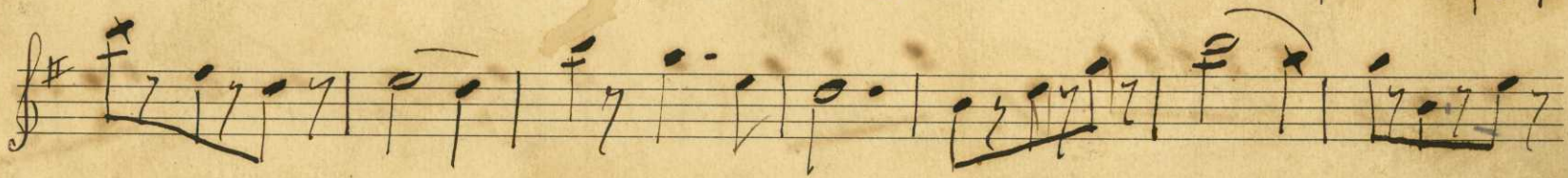
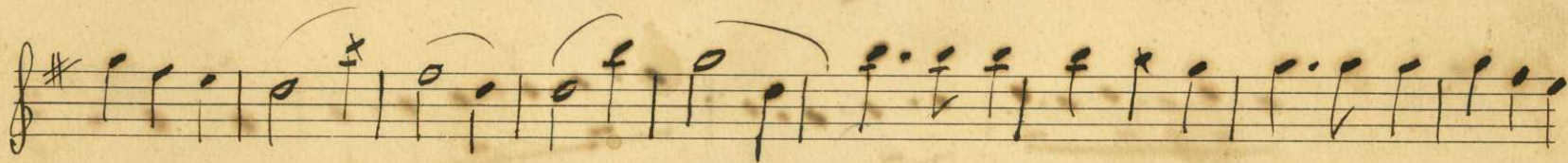
FRITZ KARLSSON 05

FABRIKSMARKE



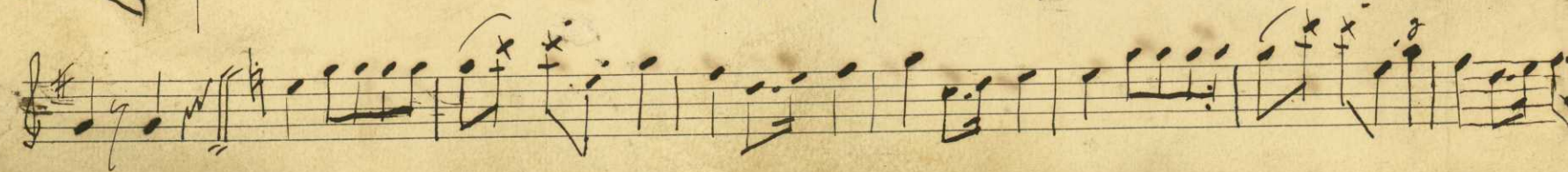
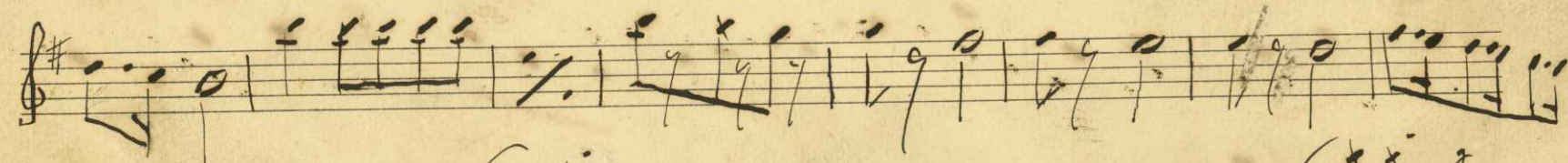
127 D

Op. 1.



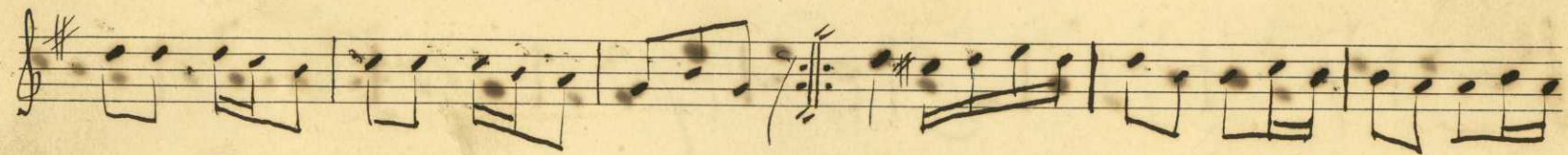
No 2.

Hamba Polka



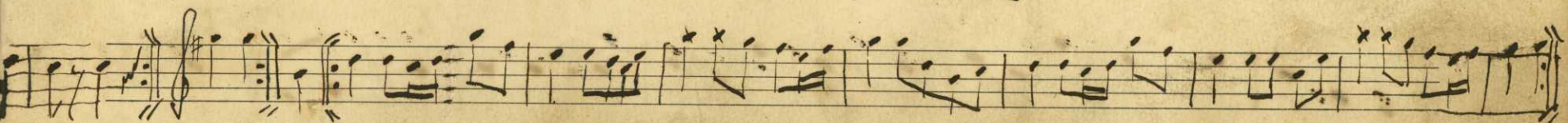
No 3.

Polka



No 4

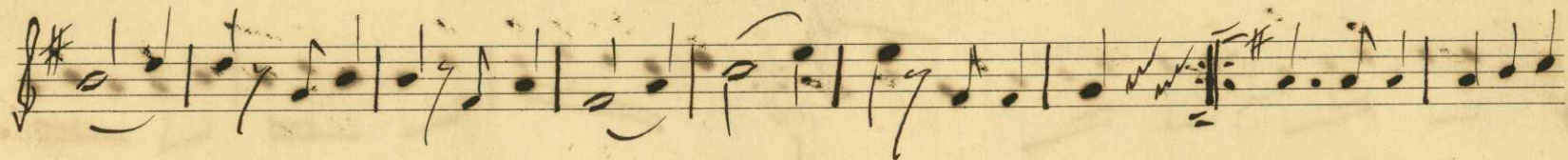
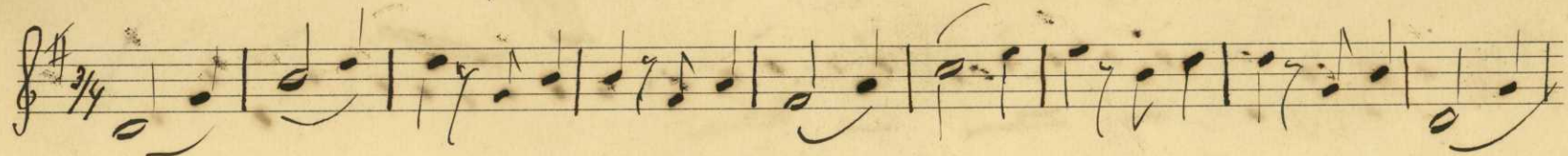
Polka



~

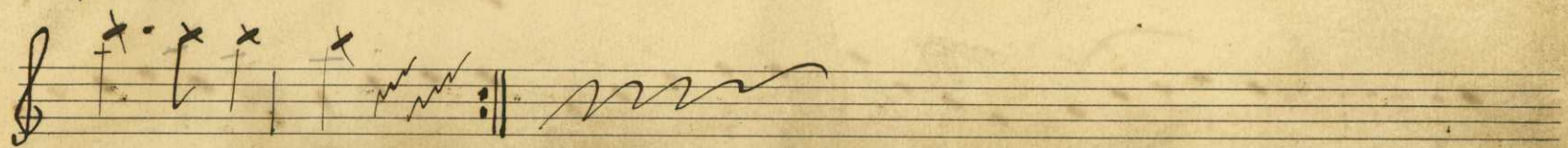
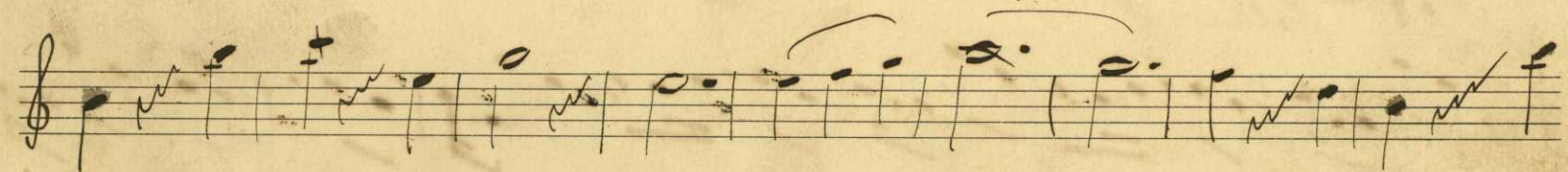
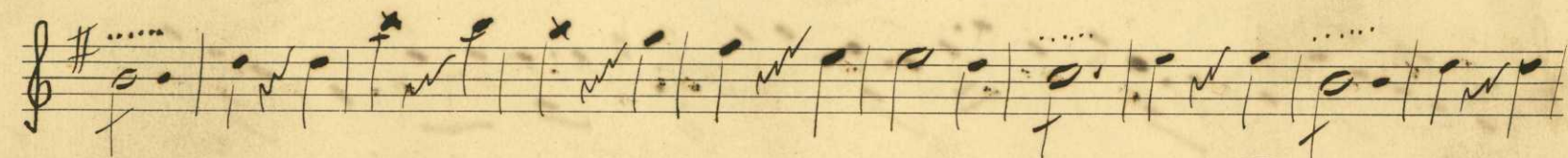
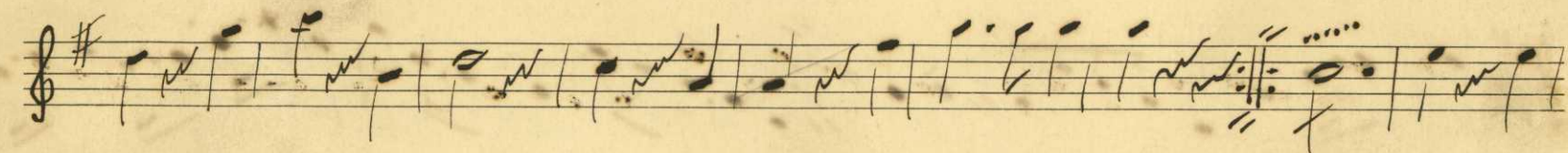
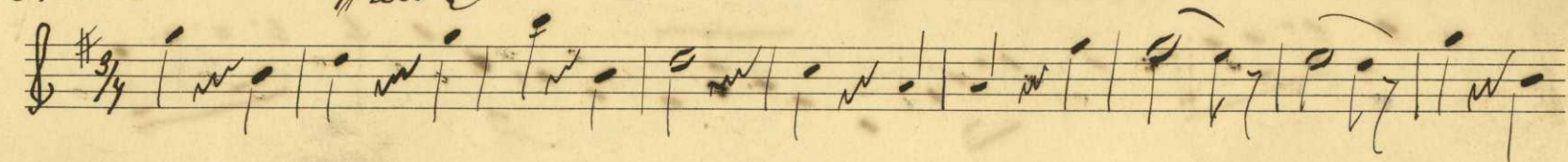
N^o 5.

Wals



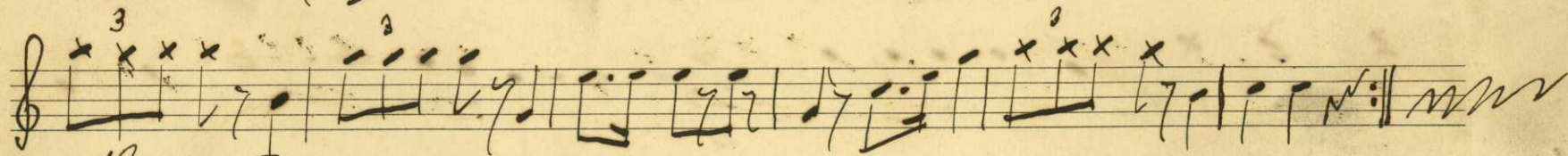
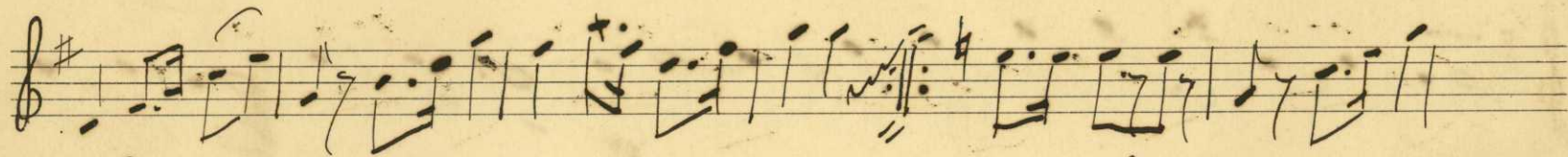
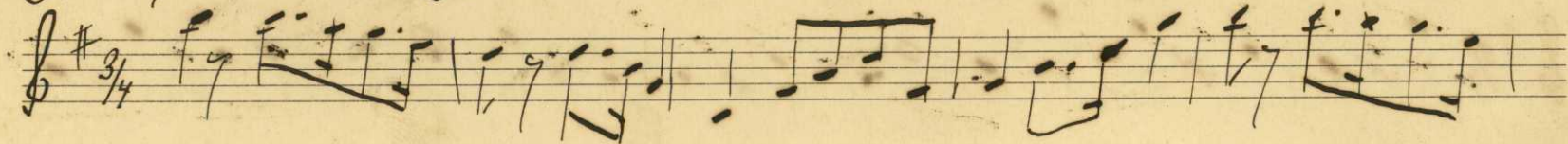
No. 6.

Wals.

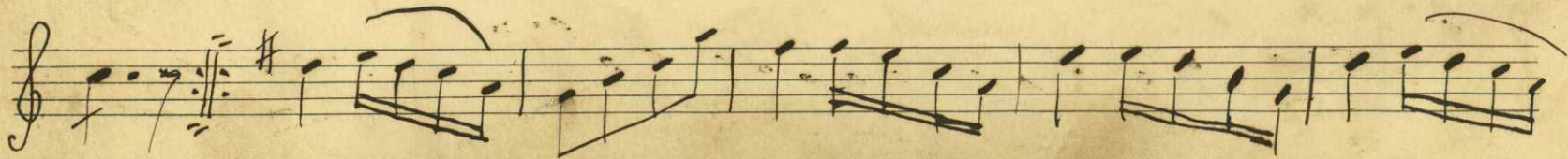
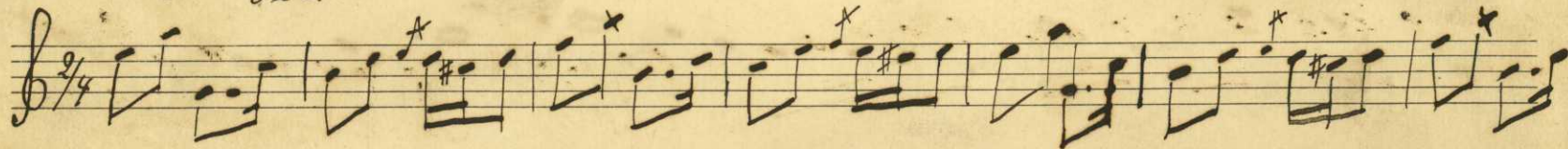


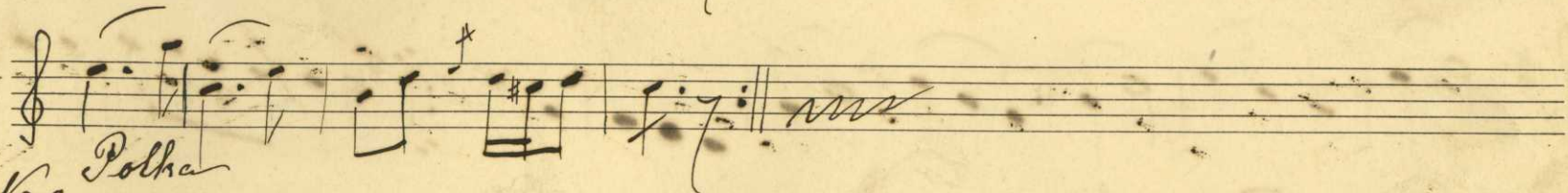
No 7

Hambo Polka

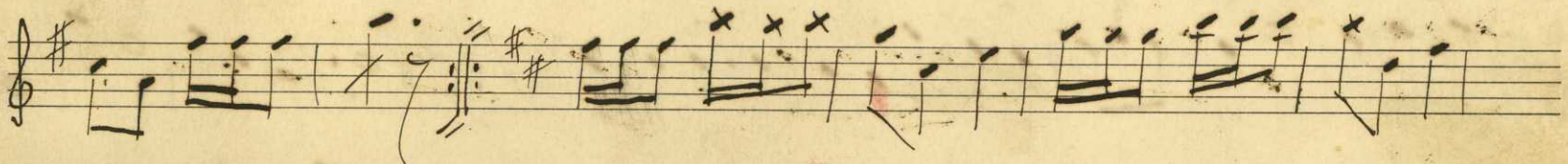


No 8 Polka





No 9 Polka



No 10

Wals

This is a handwritten musical score for a waltz, consisting of six staves of music. The notation is in treble clef with a key signature of one sharp (F#) and a 3/4 time signature. The music features a variety of rhythmic patterns, including eighth and sixteenth notes, and rests. There are several triplets marked with a '3' and some notes marked with an 'x'. The score includes repeat signs and a double bar line with repeat dots. The paper shows signs of age, with some staining and discoloration.

Handwritten musical notation on a single staff, featuring a treble clef, a key signature of one sharp (F#), and a common time signature (C). The melody consists of eighth and sixteenth notes, with several notes marked with an 'x' above them. The piece concludes with a double bar line and a decorative flourish.

No. 11 Lambo Polka

Handwritten musical notation on a single staff, featuring a treble clef, a key signature of one sharp (F#), and a 3/4 time signature. The melody is written in a rhythmic style characteristic of a polka, with eighth and sixteenth notes. It ends with a double bar line and a flourish.

Handwritten musical notation on a single staff, featuring a treble clef, a key signature of one sharp (F#), and a common time signature (C). The melody continues with eighth and sixteenth notes, ending with a double bar line and a flourish.

Handwritten musical notation on a single staff, featuring a treble clef, a key signature of one sharp (F#), and a common time signature (C). The melody includes some notes with dots above them, possibly indicating grace notes or ornaments. It ends with a double bar line and a flourish.

Handwritten musical notation on a single staff, featuring a treble clef, a key signature of one sharp (F#), and a common time signature (C). The melody continues with eighth and sixteenth notes, ending with a double bar line and a flourish.

Handwritten musical notation on a single staff, featuring a treble clef, a key signature of one sharp (F#), and a common time signature (C). The melody concludes with a double bar line and a flourish.

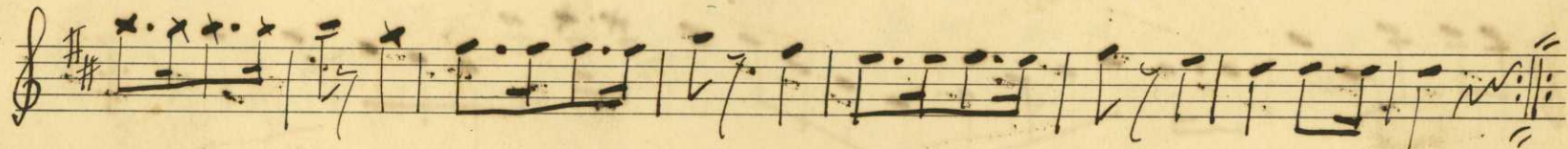
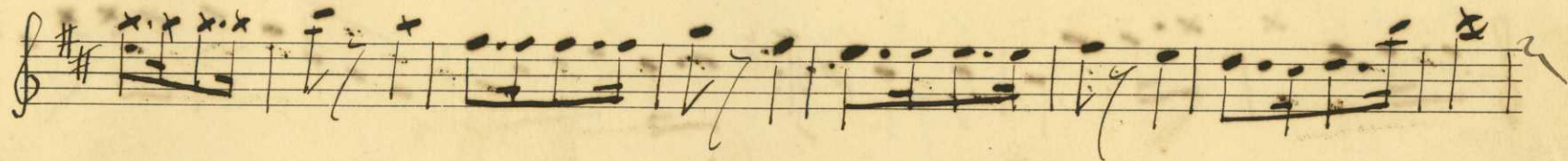
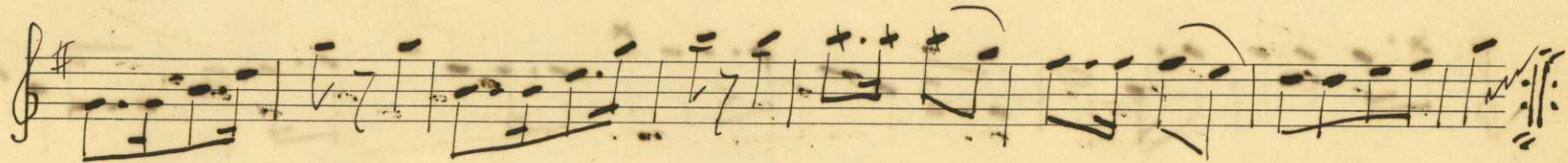
No 12

Galoppe

This image shows a handwritten musical score for a piece titled "Galoppe", numbered "No 12". The score is written on six staves of music, all in treble clef. The key signature is one sharp (F#), and the time signature is 3/4. The notation includes various rhythmic values such as eighth and sixteenth notes, as well as rests and dynamic markings like "p" (piano) and "f" (forte). There are some corrections and markings throughout, including a double bar line with repeat dots in the third staff, a section of the fourth staff that has been crossed out with a large 'X', and several asterisks (*) placed above notes in the fifth and sixth staves. The paper shows signs of age, with some staining and foxing.

N^o 13

Galoppe



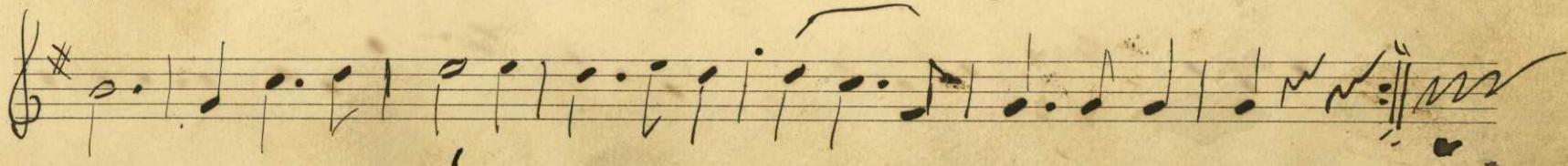
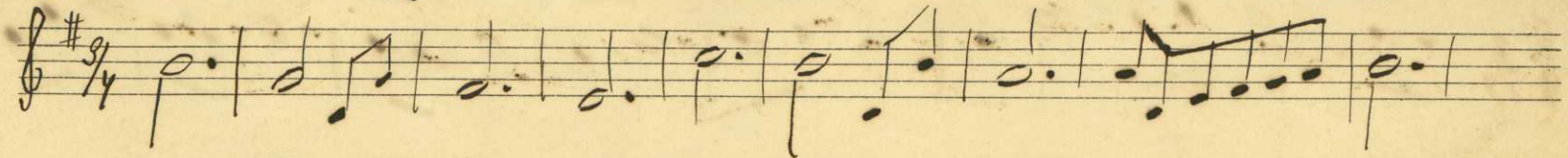
No 14

Hambo Polka.

A handwritten musical score for a piece titled "Hambo Polka", numbered "No 14". The score is written on six staves of five-line music paper. The first staff begins with a treble clef and a 3/4 time signature. The music is written in a single melodic line, featuring a mix of eighth and sixteenth notes, often beamed together. There are several instances of notes marked with an 'x', possibly indicating specific performance techniques or ornaments. The key signature changes from one sharp (F#) to two sharps (F# and C#) in the fourth staff. The piece concludes with a double bar line and a decorative flourish in the sixth staff.

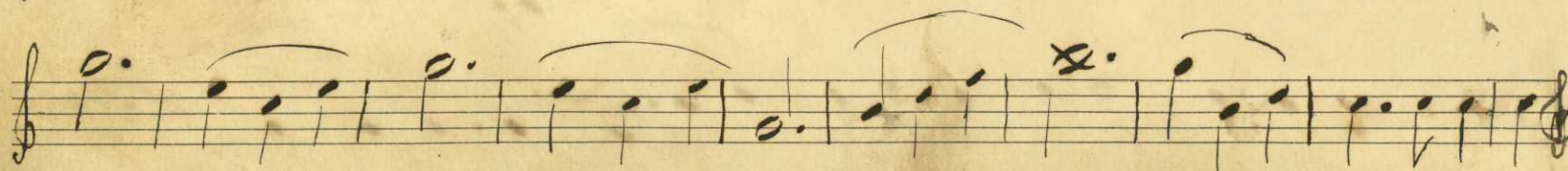
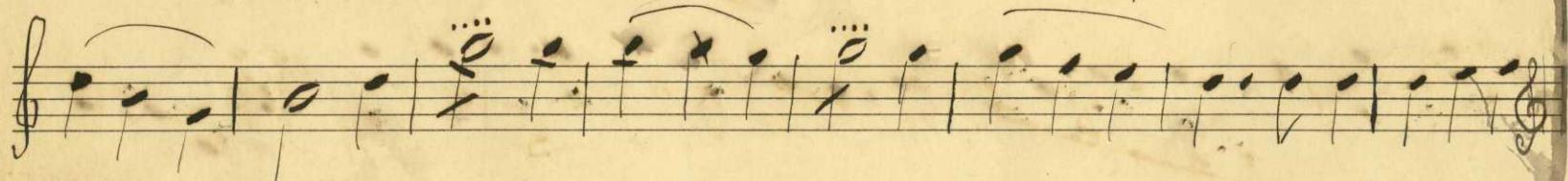
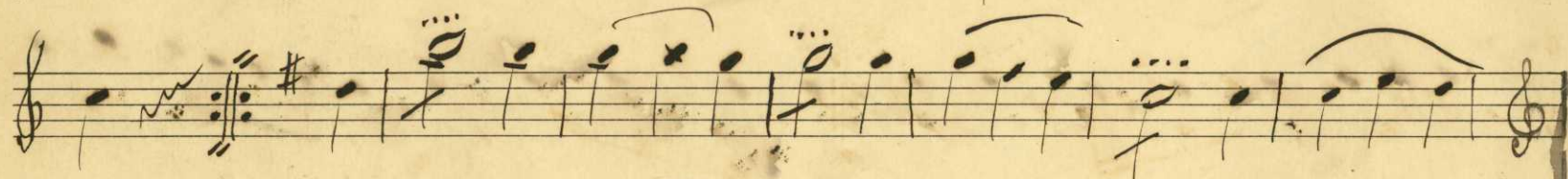
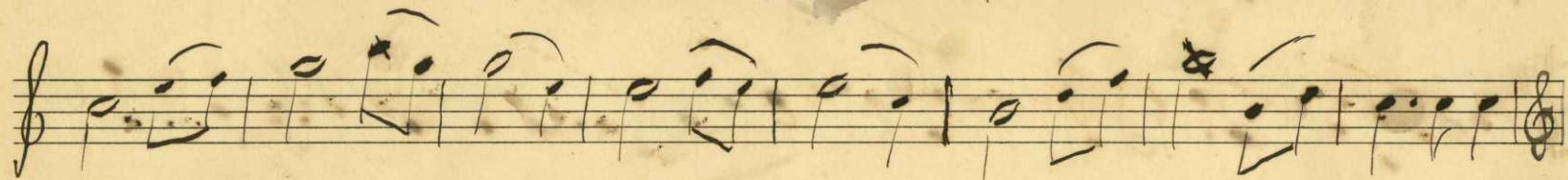
No 15

goda Valse



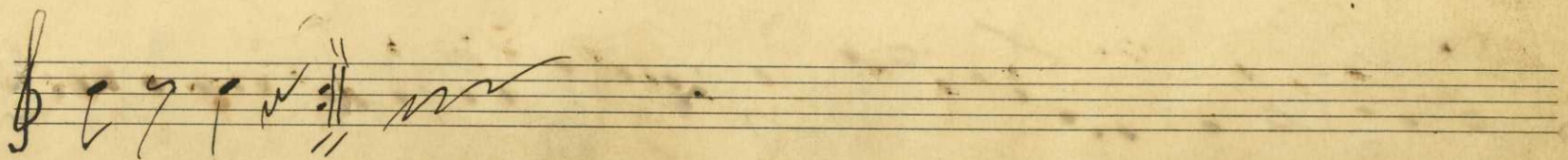
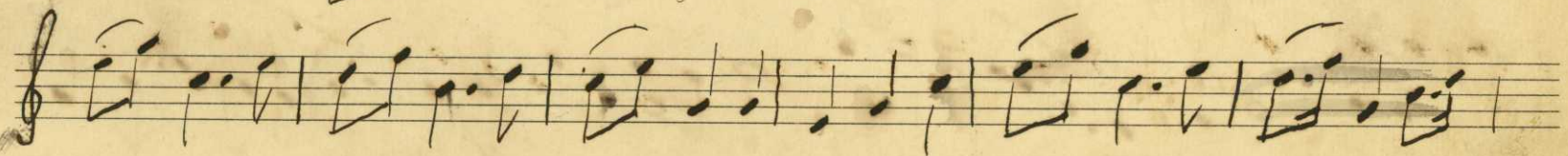
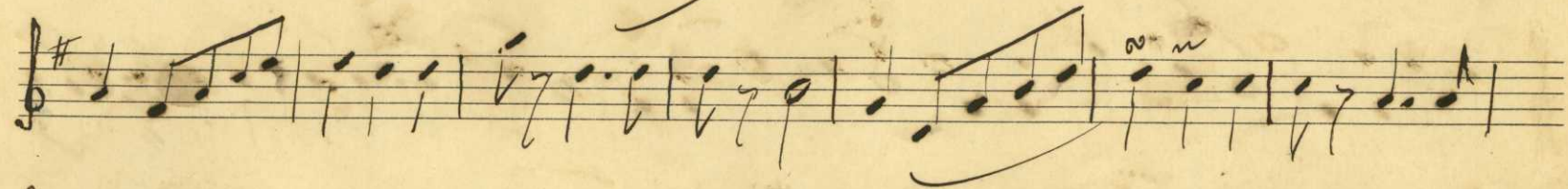
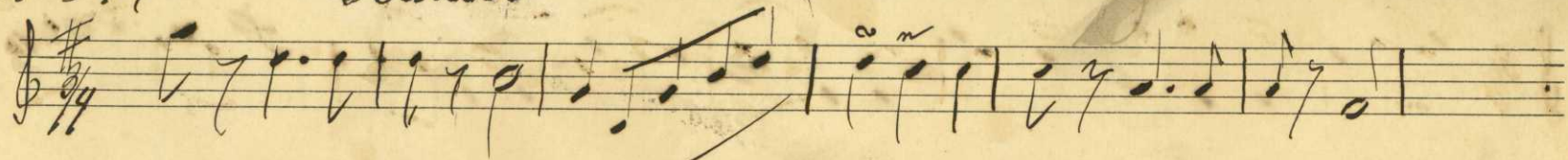
No. 16

Vals



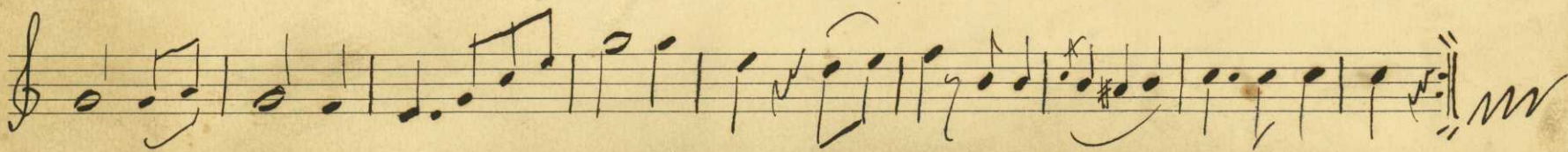
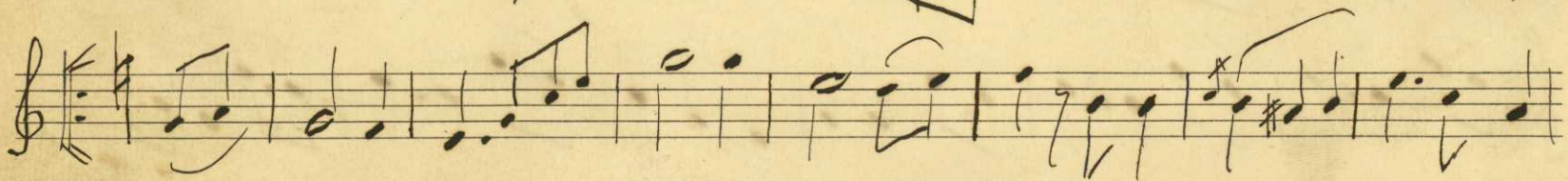
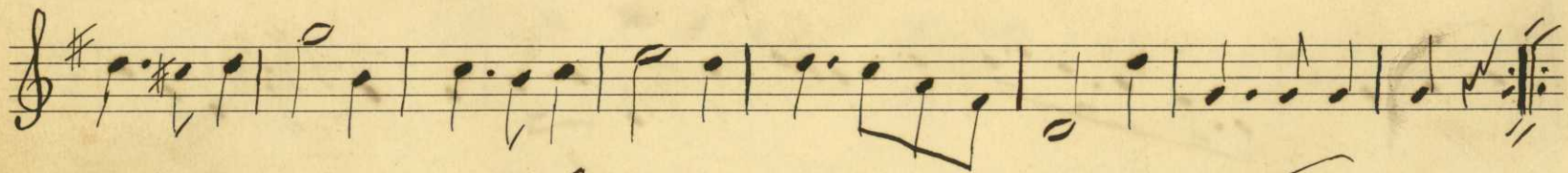
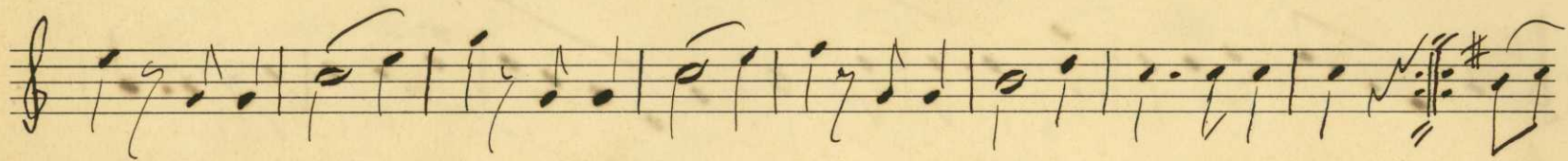
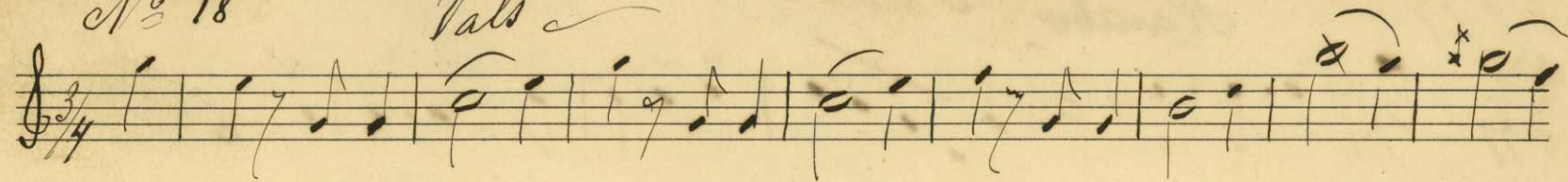
m

No 17. *Haribo Polka*



No 18

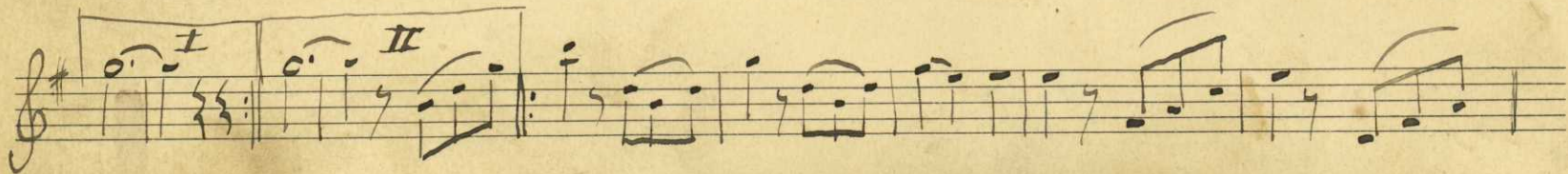
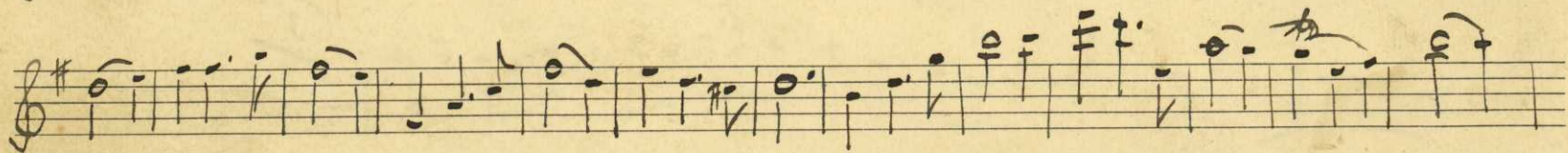
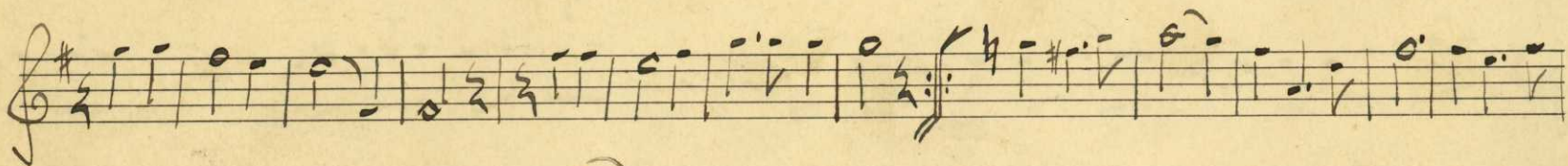
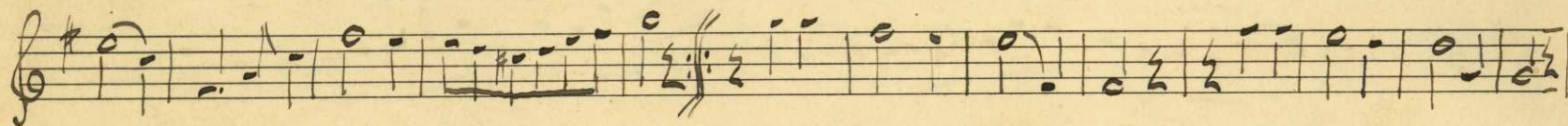
Wals

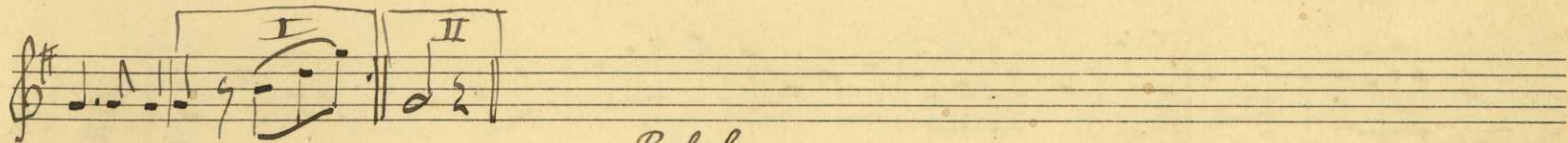
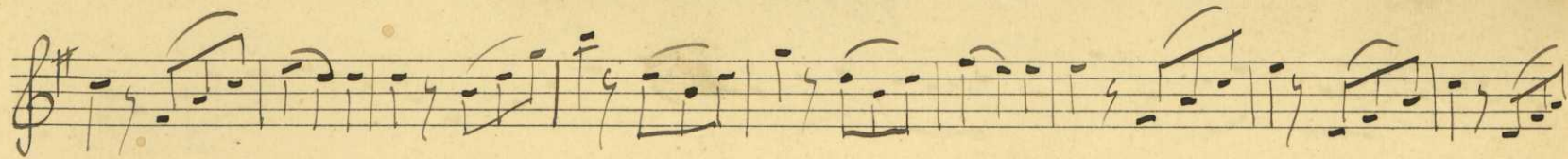


La Paloma

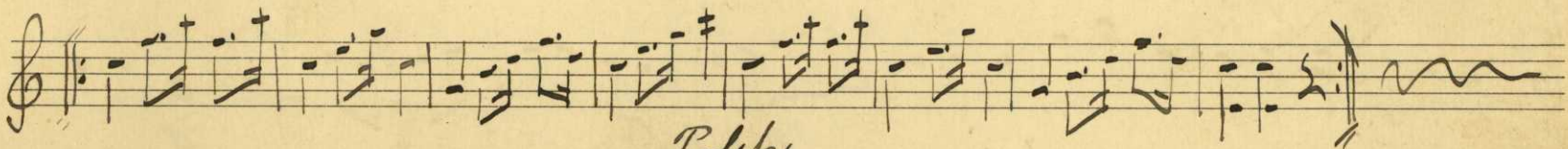
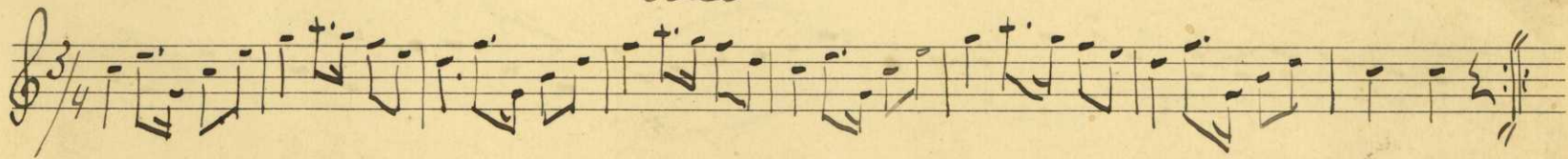
This image shows a handwritten musical score for the piece "La Paloma". The music is written on six staves in G major (one sharp) and 3/4 time. The score is characterized by a high density of triplets, indicated by the number "3" above groups of notes, and various slurs connecting these groups. The notation includes eighth and sixteenth notes, as well as rests. The first staff begins with a treble clef, a key signature of one sharp (F#), and a 3/4 time signature. The piece concludes with a double bar line and a wavy line on the final staff.

Godt nytt år, Vals.

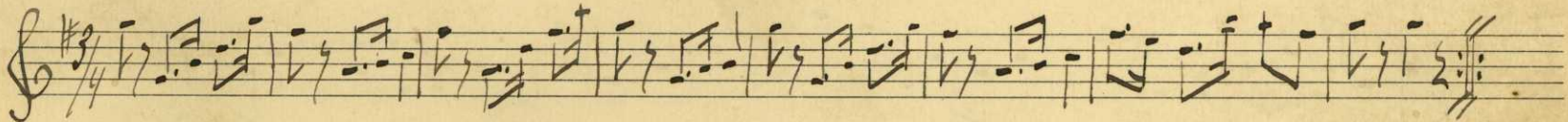




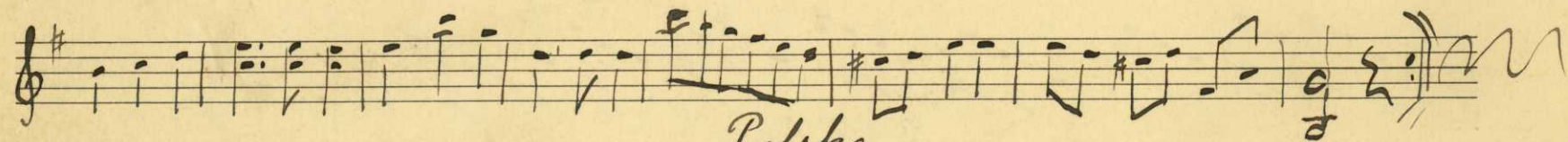
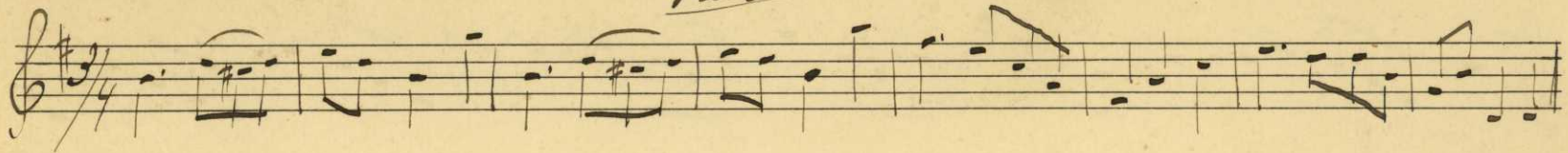
Polska



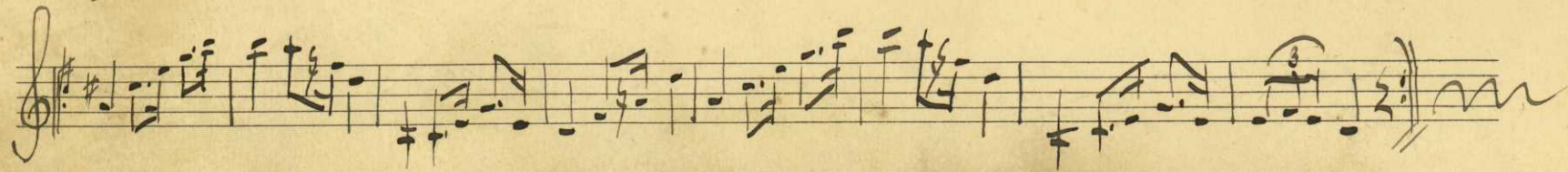
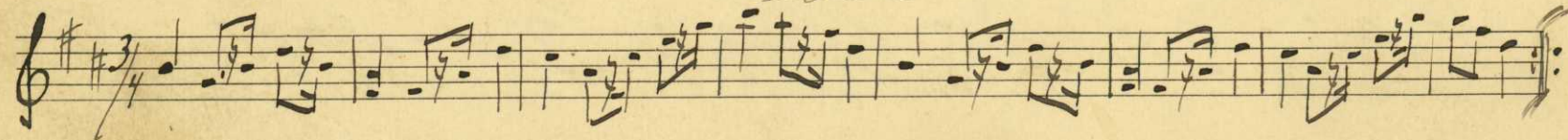
Polska



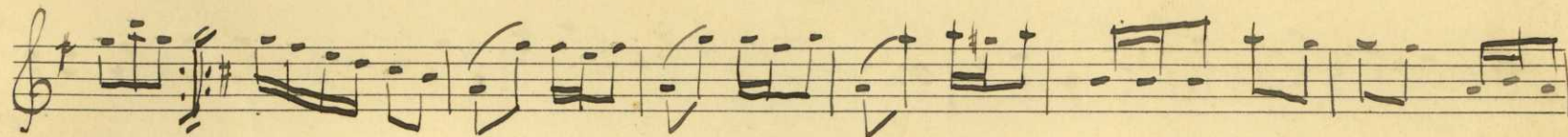
Vals



Polska.

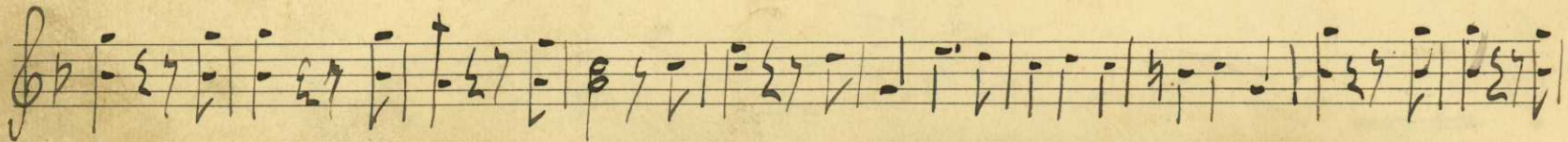
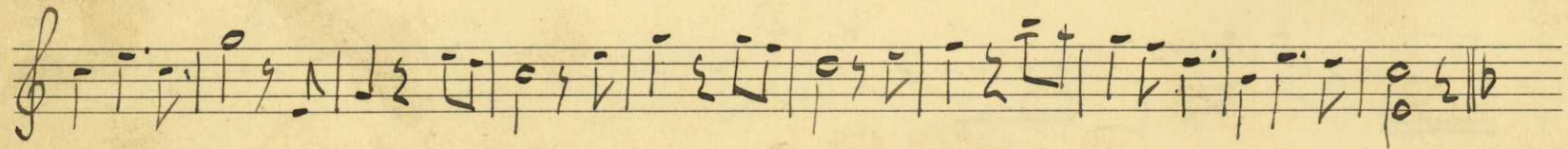
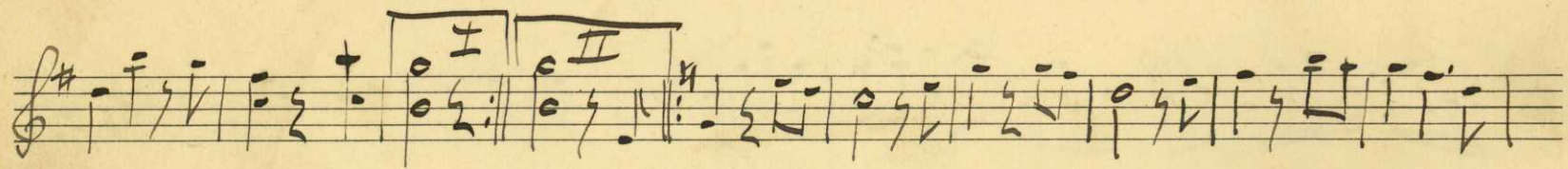
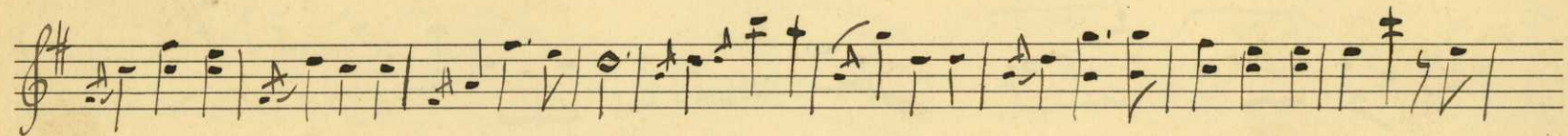
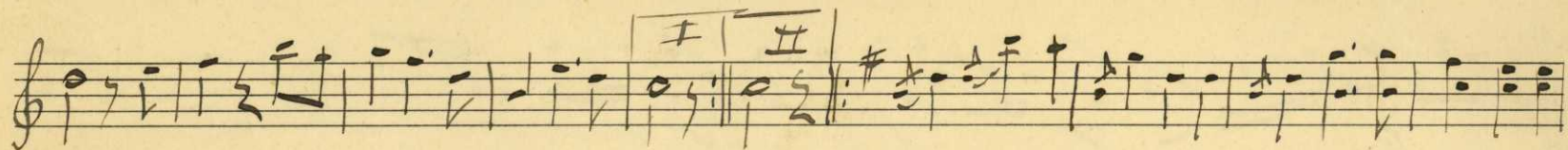
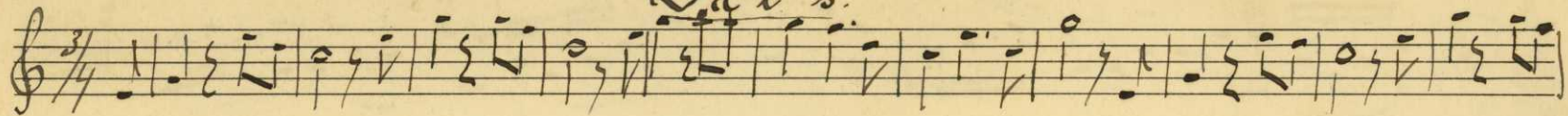


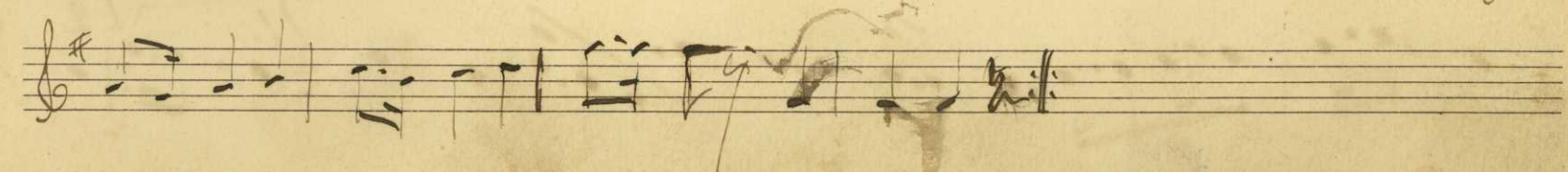
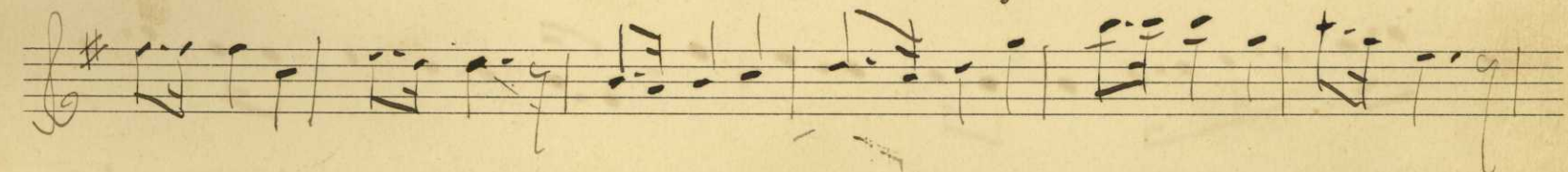
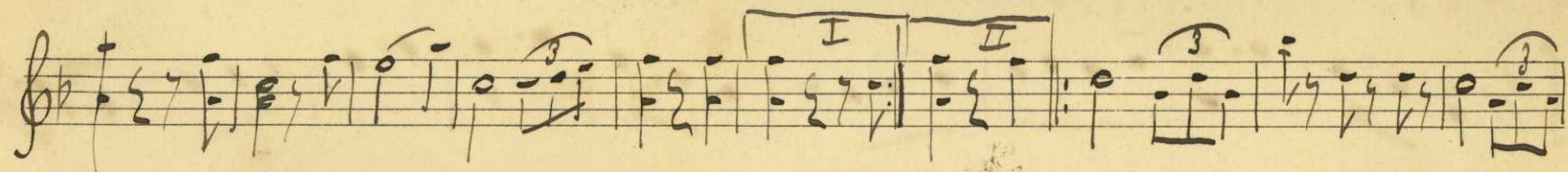
Alsklings-Polka.



Blomsterdrömmen

Viol. s.





No 28

March

