

S. N: 5.

N: 1

Not. Dansar och Polskar.

Violin Primo

afskedd för 1878 N: 122 d 27 Maj

126 A 1 Juni

158 11 Juli

PR.S.

N^o III. Polska

N^o 1.

bis

bis

bis

Polska

N^o 2. ✓

bis

bis

bis

Polska

(N^o 3) ✓

bis

bis

bis

N^o 3 Polka N^o 110

No. 4

Palska
No. 112.

1. Var. tin
Palskan
No. 14.

2 o 3 Var. in angfær defemma. Apstærjens defönu ef.

Palskan
No. 5.

No. 114

Palska No. 6. No. 120

No. 6.

No. 7. *No. 127 Polska*
Two staves of handwritten musical notation in G major and 3/4 time. The first staff includes the word *et d.* above the notes. The piece concludes with a double bar line and repeat dots.

No. 8. *No. 116 Polska*
Two staves of handwritten musical notation in G major and 3/4 time. The first staff includes the word *bis* above the notes. The piece concludes with a double bar line and repeat dots.

No. 9. *Polska*
Two staves of handwritten musical notation in B-flat major and 3/4 time. The first staff includes the word *Finis* above the notes. The second staff includes the text *Pat. An. Capro* below the notes.

No. 10. *No. 113 Polska*
Two staves of handwritten musical notation in B-flat major and 3/4 time. The first staff includes the words *Fin* and *Bis.* above the notes. The second staff includes the text *Pat. A. C.* below the notes.

No. 11. *Polska No. 129*
Two staves of handwritten musical notation in G major and 3/4 time.

Trio

Polska № 132
№ 12

№ 13 *Polska* № 128

№ 14 *Polska*

№ 15 *Polska*

№ 16 *Polska*

Polska No 17

(No 17)

Trio

Polska No 18

No 18. No 19 Polska

(No 19)



Polska No 119.

No 20



Polska No 146

No 21



No 22

No 22 Polska



Polska 147.

No 23



Path.
Path.

his
Fen

no
24. *Polska 148.*

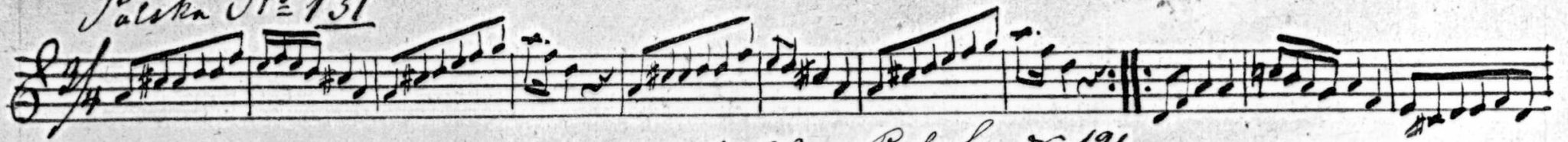
no
25. *Polska No 133*

(26) *No 26. Polska 139*

no
27. *Polska No 136.*

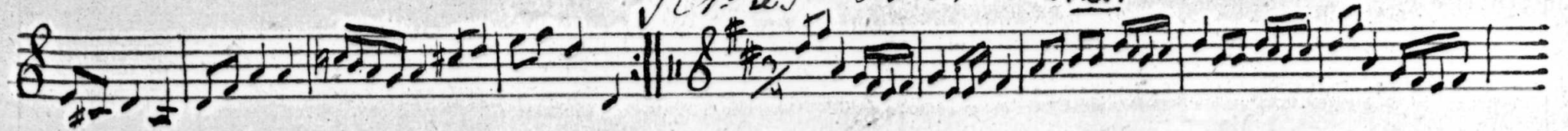
Polska № 131

№ 28



(29)

№ 29 Polska № 121.



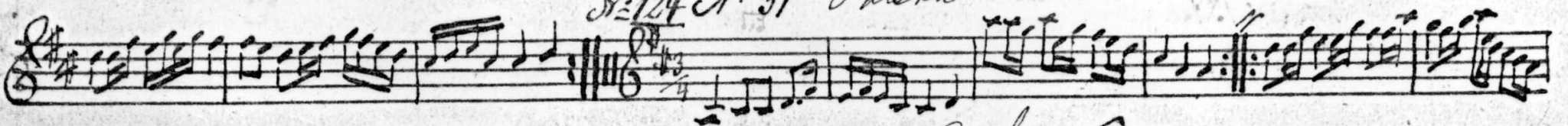
Polska № 122

№ 30



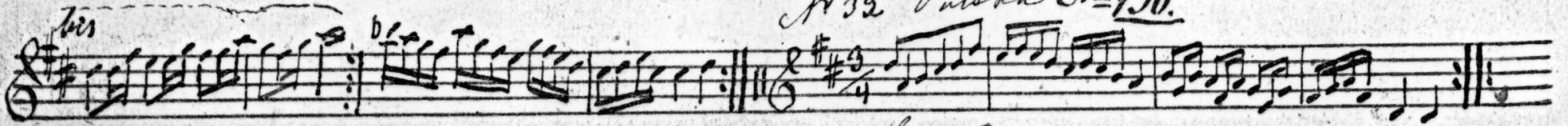
(31)

№ 124 № 31 Polska



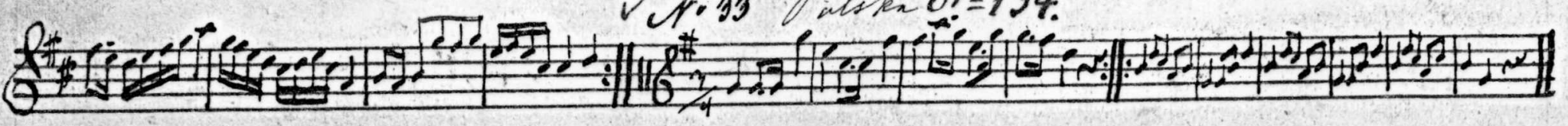
(32)

№ 32 Polska № 130.



(33)

№ 33 Polski № 134.



Polska № 135

№ 34

№ 35 Polska № 142

(35)

Polska № 145

№ 36

Slunopolska em Skulska

№ 37

Polska

№ 38

Polska № 138

№ 39

№ 40 Polska

№ 40

№ 41. Polska № 123

(41)

No 42. Palska

No 125

No 43 No 144 Palska

No 140 No 44 Palska

(44)

No 45

(46)

etydlyhet i det ut som alskrisens gör för det är först
 indrarna (om dessa pölskor, nr 45 och 46, tillhör en och samma
 eller om om det verkligen är en pölska tyger för sig.

Polska. Basen stämmd: D

No 47 ✓

bis

No 48 ✓ *Polska* *49 yr* *bis* *Från denna Polska har jag fått* (af Hultgren i Huddinge)

No 49 ✓

(50) ✓ No 50 *Polska ur "Bettmans Epitola"*

(51) *bis* No 51 *149* (Uerking)

(52) ✓ No 52

his

(53)

No 53

no
54. v
Se 40

Tiro (fr Dalarne)

No 55 Humba palika fr Uppland.

(56)

No 56

No 57 Humba N: 143

(57)

Vaste

No 58.

(58)

Handwritten musical notation for No. 58, first staff. It begins with a treble clef, a key signature of one sharp (F#), and a 4/4 time signature. The notation includes a double bar line, a repeat sign, and various rhythmic values such as eighth and sixteenth notes.

No 59

Handwritten musical notation for No. 59, first staff. It features a treble clef, a key signature of one sharp (F#), and a 4/4 time signature. The notation is dense with sixteenth and thirty-second notes. A handwritten note at the end reads "Harm. of A. G. Rosenberg".

Handwritten musical notation for No. 59, second staff. It continues the piece with complex rhythmic patterns, including many beamed sixteenth and thirty-second notes.

No 60

Handwritten musical notation for No. 60, first staff. It starts with a treble clef, a key signature of one sharp (F#), and a 3/4 time signature. The notation includes a dynamic marking "p f" and a trill symbol "tr". A handwritten note at the end reads "Harm. of A. G. Rosenberg".

Handwritten musical notation for No. 60, second staff. It begins with a treble clef, a key signature of one sharp (F#), and a 3/4 time signature, showing the start of a new musical phrase.

Four empty musical staves, each consisting of five horizontal lines, arranged vertically. They are currently blank.